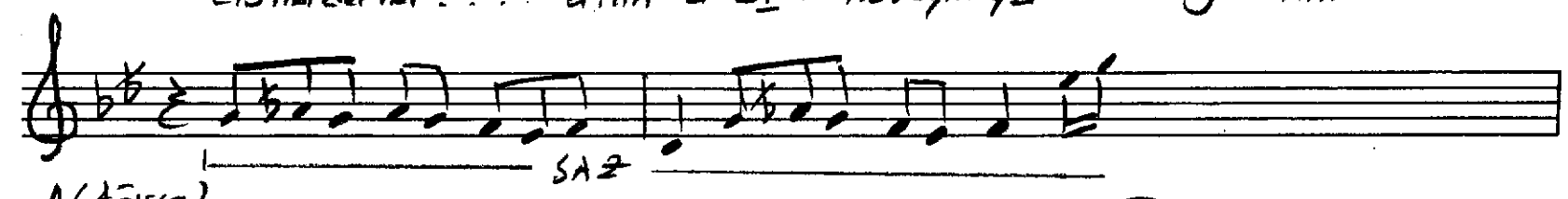
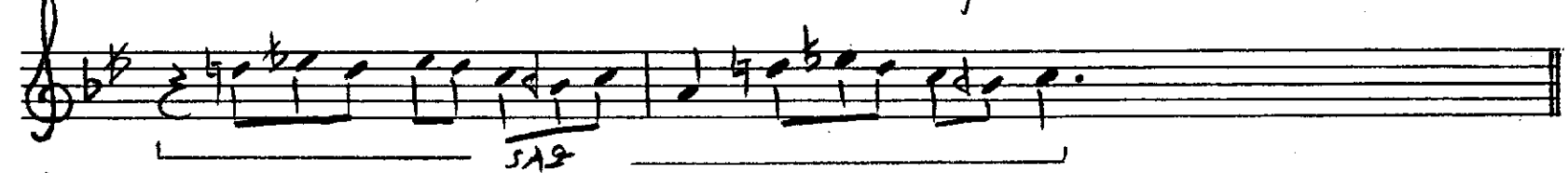
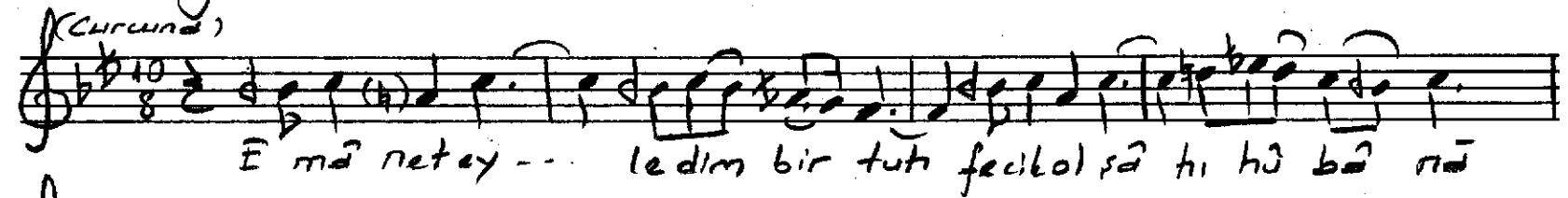
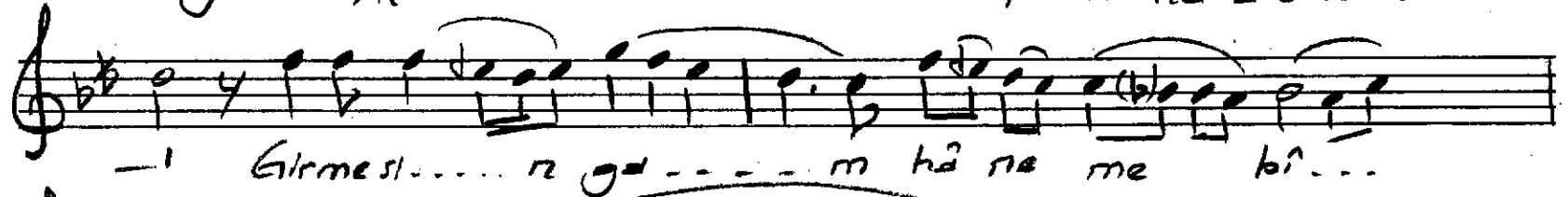
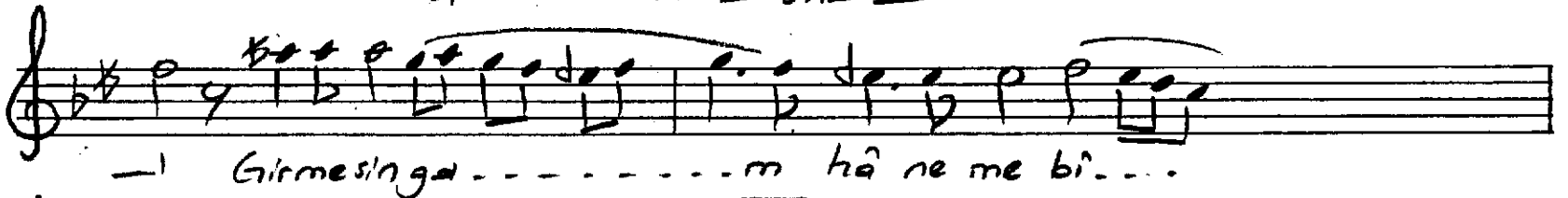
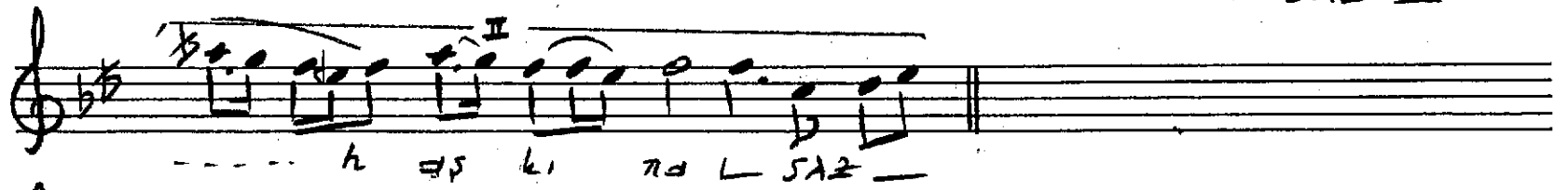
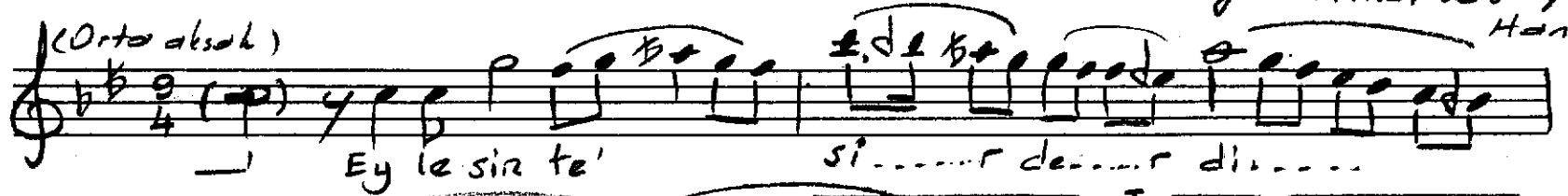


alsulu! Degismeli

SEVK-EFSA SARKI

Beste: Gönül Paşası
Güfte: Fitnat ve Leyla
Hanımlar



SAZ Ritt...

Fitna ti ge... l ey le me di...

vâ ne Al... lâ... k aş ki na SAZ

Fitna ti ge... l ey le me di

vâ ne Al lâ... k aş ki na SON

İylesin te'sir derdin cânı Allâh aşkına
Girmesin gamkârıma bîgâne Allâh aşkına

Emanet eyledim bir tutfeül ol fâh-ı hûbânâ
Gönül derler anın âdına LEYLÂ yâdlıgârımdır

Dil harâb-âbâd-ı âstindir unutma rahmedip
FITNAT'ı gel eyleme divâne Allâh aşkına

(Not : ilk ve son beyitler Hazine-dar-ı-şâde Fitnat
Hanım'a - 1842 / 1911 ;

İkinci beyit ise Leyla Hanım'a aittir - Ölmü 1848)